

# \$174,900 - 18277 84 Avenue Nw, Edmonton

MLS® #E4219391

## \$174,900

4 Bedroom, 2.00 Bathroom, 990 sqft  
Condo / Townhouse on 0 Acres

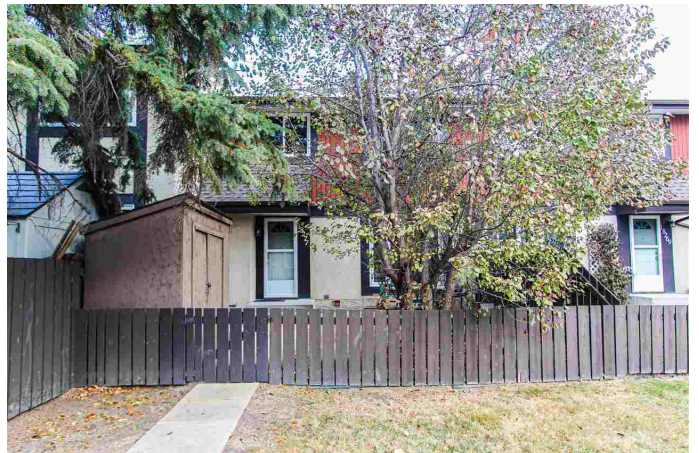
Aldergrove, Edmonton, AB

Welcome to this wonderful 4 bedroom 1.5 bathroom townhome in the heart of the west end community of Aldergrove. On the main floor you will find a generous sized kitchen with ample counter space, a dining area, living room that overlooks the back yard and a half bath. Upstairs you will find 3 good sized bedrooms and a full 3 piece bathroom. The basement consists of a living area, bedroom, storage and laundry. Good sized backyard with a large storage shed is just around the corner from the parking stall. Perfect starter home in Aldergrove, close to schools, daycare, public transit, West Edmonton Mall, etc.

Built in 1977

### Essential Information

MLS® #	E4219391
Price	\$174,900
Bedrooms	4
Bathrooms	2.00
Full Baths	1
Half Baths	1
Square Footage	990
Acres	0.06
Year Built	1977
Type	Condo
Sub-Type	Townhouse



Style 2 Storey  
Status ACTIVE

### Community Information

Address 18277 84 Avenue Nw  
Area Edmonton  
Subdivision Aldergrove  
City Edmonton  
County ALBERTA  
Province AB  
Postal Code T5T 1T7

### Amenities

Features Detectors Smoke, Hot Water Natural Gas, Laundry-In-Suite, No Smoking Home, Parking-Plug-Ins, Parking-Visitor, Patio, Programmable Thermostat, Vinyl Windows  
Parking Stall

### Interior

Interior Ceramic Tile, Laminate Flooring  
Interior Features Dryer, Fan-Ceiling, Hood Fan, Refrigerator, Storage Shed, Stove-Electric, Washer, Window Coverings  
Heating Forced Air-1  
Bedrooms on Main Level N  
Has Basement Yes  
Basement Full, Fully Finished  
# of Stories 3

### Exterior

Exterior Stucco  
Exterior Features Fenced, Flat Site, Low Maintenance Landscape, Playground Nearby, Public Transportation, Schools, Shopping Nearby  
Roof Asphalt Shingles  
Construction Wood Frame  
Foundation Concrete

### Additional Information

Condo Fee \$357

Listing information last updated on January 18th, 2021 at 12:46pm MST