

\$949,900 - 405 14105 West Block Drive, Edmonton

MLS® #E4419921

\$949,900

2 Bedroom, 2.50 Bathroom, 1,551 sqft

Condo / Townhouse on 0.00 Acres

Glenora, Edmonton, AB

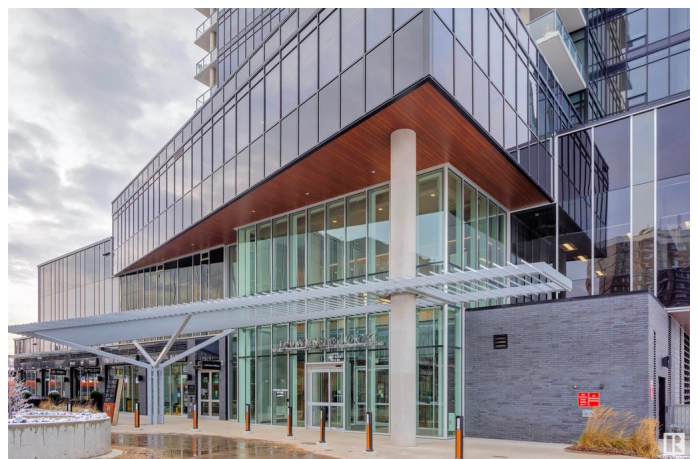
Enjoy breathtaking south and east exposures from this exceptional residence. Your best life begins with a home that inspires you. Welcome to the Upper West Side at West Block Glenora. Edmonton's most prestigious address. This premium southeast corner unit offers over 1,550 sq. ft. of exquisite design and the finest materials. The unparalleled primary suite features a luxurious soaker tub, dual vanities, a makeup station, and a marble-tiled shower. An additional bedroom with its own ensuite and a generous in-suite storage room and separate laundry that complete the layout. Luxury is redefined with Carrara marble accents, wide plank hardwood floors, and Bosch appliances. Residents enjoy world-class amenities, including indoor and outdoor lounges, an oversized fenced dog run, a state-of-the-art fitness center, meeting rooms, and a private hotel suite for guests. Two titled parking stalls and a titled storage unit are included. Experience elevated living in Edmonton's most coveted community!

Built in 2019

Essential Information

MLS® # E4419921

Price \$949,900



Bedrooms	2
Bathrooms	2.50
Full Baths	2
Half Baths	1
Square Footage	1,551
Acres	0.00
Year Built	2019
Type	Condo / Townhouse
Sub-Type	Apartment High Rise
Style	Single Level Apartment
Status	Active

Community Information

Address	405 14105 West Block Drive
Area	Edmonton
Subdivision	Glenora
City	Edmonton
County	ALBERTA
Province	AB
Postal Code	T5L 1L5

Amenities

Amenities	Air Conditioner, Car Wash, Closet Organizers, Deck, Detectors Smoke, Dog Run-Fenced In, Exercise Room, Guest Suite, Parking-Visitor, Party Room, Security Door, Social Rooms, Concierge Service
Parking Spaces	2
Parking	Heated, Parkade, Underground

Interior

Interior Features	ensuite bathroom
Appliances	Dishwasher-Built-In, Dryer, Hood Fan, Oven-Microwave, Refrigerator, Stove-Countertop Gas, Washer, Window Coverings, Oven Built-In-Two
Heating	Heat Pump, Natural Gas
Fireplace	Yes
Fireplaces	Insert
# of Stories	16
Stories	1
Has Basement	Yes
Basement	None, No Basement

Exterior

Exterior	Concrete
Exterior Features	Corner Lot, Playground Nearby, Public Transportation, River Valley View, River View, Schools, Shopping Nearby, View City, View Downtown
Roof	EPDM Membrane
Construction	Concrete
Foundation	Concrete Perimeter

Additional Information

Date Listed	January 31st, 2025
Days on Market	90
Zoning	Zone 11
Condo Fee	\$1,329

DATA IS DEEMED RELIABLE BUT IS NOT GUARANTEED ACCURATE BY THE REALTORS® ASSOCIATION OF EDMONTON. COPYRIGHT 2025 BY THE REALTORS® ASSOCIATION OF EDMONTON. ALL RIGHTS RESERVED.Trademarks are owned or controlled by the Canadian Real Estate Association (CREA) and identify real estate professionals who are members of CREA (REALTOR®, REALTORS®) and/or the quality of services they provide (MLS®, Multiple Listing Service®)

Listing information last updated on May 1st, 2025 at 11:47am MDT