

\$1,650,000 - 12436 88 Street, Edmonton

MLS® #E4424456

\$1,650,000

5 Bedroom, 4.00 Bathroom, 1,196 sqft
Single Family on 0.00 Acres

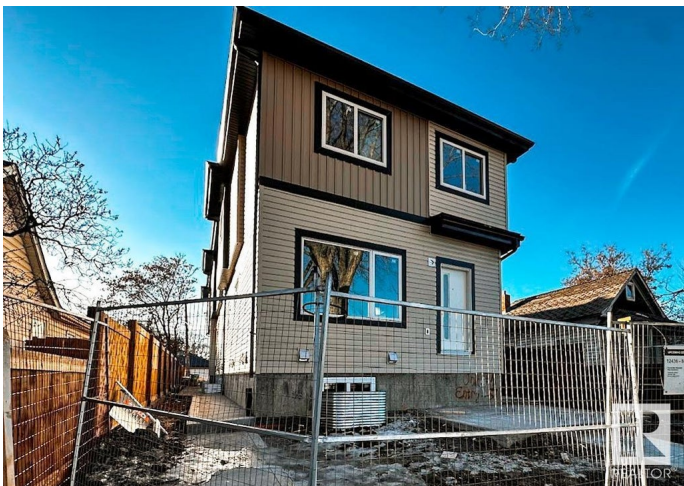
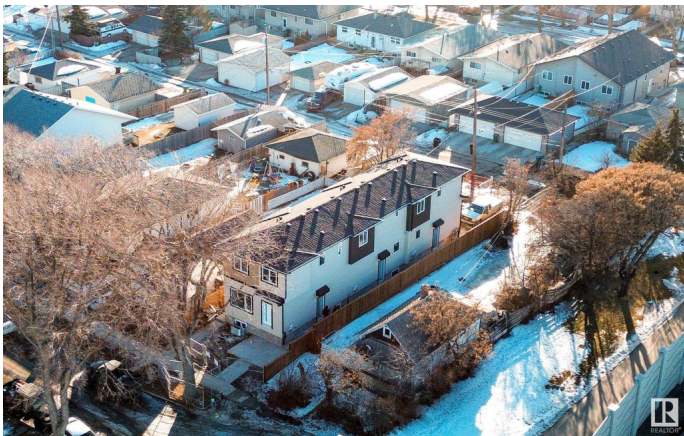
Delton, Edmonton, AB

Multi-family Investors!! QUICK possession ready in JULY 2025. Total 6 units - 3plex Townhouse project. Two Upper units each has 3 beds and 2.5 baths. The Corner Upper unit it has 4 beds and 3 full baths. All Lower units each has 1 bed and 1 bath. The 3plex Project is perfect for CMHC MLI Select program. It's an easy 5% down payment deal. This project is currently under construction. Specs. highlights: 95% high efficient Trane furnace, R20 basement insulation, Spray foam basement joint, R52 attic blow insulation, 200 AMPS, 50 gallon HWT, 9" main & basement ceiling height, MDF shelving, (Delta/Danze/Pfister or equivalent) fittings, Vinyl flooring stairs and second floor..... Some images of vinyl flooring, bathroom mirror and toilet are 3D renderings for demonstration purposes.

Built in 2025

Essential Information

| | |
|----------------|-------------|
| MLS® # | E4424456 |
| Price | \$1,650,000 |
| Bedrooms | 5 |
| Bathrooms | 4.00 |
| Full Baths | 4 |
| Square Footage | 1,196 |
| Acres | 0.00 |



| | |
|------------|---------------|
| Year Built | 2025 |
| Type | Single Family |
| Sub-Type | Tri-Plex |
| Style | 2 Storey |
| Status | Active |

Community Information

| | |
|-------------|-----------------|
| Address | 12436 88 Street |
| Area | Edmonton |
| Subdivision | Delton |
| City | Edmonton |
| County | ALBERTA |
| Province | AB |
| Postal Code | T5B 3T2 |

Amenities

| | |
|----------------|---------------------------------------|
| Amenities | Ceiling 9 ft., 9 ft. Basement Ceiling |
| Parking Spaces | 3 |
| Parking | Parking Pad Cement/Paved |

Interior

| | |
|-------------------|--|
| Interior Features | ensuite bathroom |
| Appliances | Dishwasher-Built-In, Dryer, Microwave Hood Fan, Refrigerator, Stove-Electric, Washer |
| Heating | Forced Air-1, Natural Gas |
| Stories | 3 |
| Has Suite | Yes |
| Has Basement | Yes |
| Basement | Full, Finished |

Exterior

| | |
|-------------------|--------------------|
| Exterior | Wood, Asphalt |
| Exterior Features | See Remarks |
| Roof | Asphalt Shingles |
| Construction | Wood, Asphalt |
| Foundation | Concrete Perimeter |

Additional Information

| | |
|-------------|-----------------|
| Date Listed | March 6th, 2025 |
|-------------|-----------------|

Days on Market 56

Zoning Zone 05

DATA IS DEEMED RELIABLE BUT IS NOT GUARANTEED ACCURATE BY THE REALTORS® ASSOCIATION OF EDMONTON. COPYRIGHT 2025 BY THE REALTORS® ASSOCIATION OF EDMONTON. ALL RIGHTS RESERVED. Trademarks are owned or controlled by the Canadian Real Estate Association (CREA) and identify real estate professionals who are members of CREA (REALTOR®, REALTORS®) and/or the quality of services they provide (MLS®, Multiple Listing Service®)

Listing information last updated on May 1st, 2025 at 1:17pm MDT