

## \$195,000 - 11372 139 Avenue, Edmonton

MLS® #E4429067

**\$195,000**

3 Bedroom, 1.50 Bathroom, 995 sqft

Condo / Townhouse on 0.00 Acres

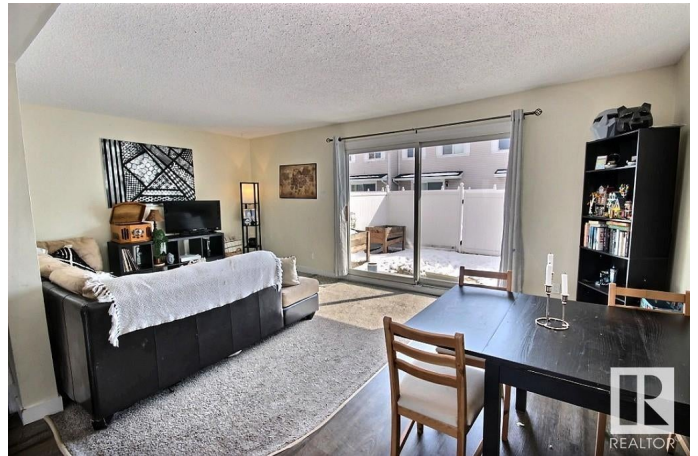
Carlisle, Edmonton, AB

Great Value! 3 bedroom townhouse located in a quite neighborhood with easy access to school, public transit, parks, and shops. This End/Corner unit has a sunny south facing living room with a fully fenced backyard. Upstairs features 3 bedroom and 1 full bathroom. A 2nd half bathroom is on the main floor. Basement has the laundry area and partly finished with a room drywalled and ready for future development. Parking stall at front and ample visitor parking just a few steps away. The current owner rents a 2nd stall directly out front of the unit for \$25/mth. Well managed complex with recent upgrades including newer shingles, windows, vinyl siding, exterior doors and maintenance free fence. Immediate possession is available. Act Now!

Built in 1977

### Essential Information

MLS® #	E4429067
Price	\$195,000
Bedrooms	3
Bathrooms	1.50
Full Baths	1
Half Baths	1
Square Footage	995
Acres	0.00



Year Built	1977
Type	Condo / Townhouse
Sub-Type	Townhouse
Style	2 Storey
Status	Active

### Community Information

Address	11372 139 Avenue
Area	Edmonton
Subdivision	Carlisle
City	Edmonton
County	ALBERTA
Province	AB
Postal Code	T5X 3L4

### Amenities

Amenities	Detectors Smoke, Hot Water Natural Gas, No Smoking Home, Parking-Visitor
Parking	2 Outdoor Stalls, Stall

### Interior

Appliances	Dryer, Fan-Ceiling, Hood Fan, Refrigerator, Stove-Electric, Washer
Heating	Forced Air-1, Natural Gas
Stories	2
Has Basement	Yes
Basement	Full, Unfinished

### Exterior

Exterior	Wood, Vinyl
Exterior Features	Corner Lot, Fenced, Low Maintenance Landscape, Picnic Area, Playground Nearby, Public Transportation, Schools, Shopping Nearby
Roof	Asphalt Shingles
Construction	Wood, Vinyl
Foundation	Concrete Perimeter

### Additional Information

Date Listed	April 4th, 2025
Days on Market	28
Zoning	Zone 27

Condo Fee                    \$409

DATA IS DEEMED RELIABLE BUT IS NOT GUARANTEED ACCURATE BY THE REALTORS® ASSOCIATION OF EDMONTON. COPYRIGHT 2025 BY THE REALTORS® ASSOCIATION OF EDMONTON. ALL RIGHTS RESERVED.Trademarks are owned or controlled by the Canadian Real Estate Association (CREA) and identify real estate professionals who are members of CREA (REALTOR®, REALTORS®) and/or the quality of services they provide (MLS®, Multiple Listing Service®)

Listing information last updated on May 2nd, 2025 at 4:17am MDT