

\$958,000 - 9245 93 Street, Edmonton

MLS® #E4432192

\$958,000

4 Bedroom, 3.50 Bathroom, 2,189 sqft

Single Family on 0.00 Acres

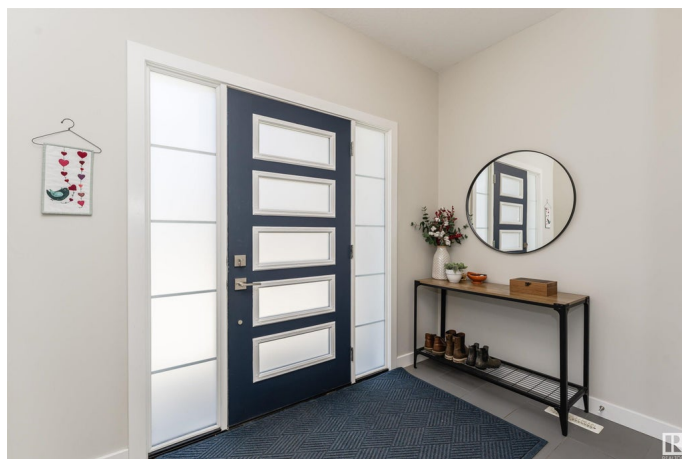
Bonnie Doon, Edmonton, AB

Welcome to this beautifully finished home in the heart of Bonnie Doon, perfectly situated on a quiet street facing Bonnie Doon Park. Just 5 minutes to downtown and Bonnie Doon Centre, and steps to Mill Creek Ravine. The backyard is fully fenced and landscaped â€“ complete with a deck and an oversized double detached garage. Inside, the main floor offers a dedicated office space, powder room, plus an open-concept living and dining area with a gas fireplace. The chef's kitchen offers a large island, walk-in pantry, and connects to the mudroom for additional storage and backyard access. Upstairs includes three bedrooms, including a primary suite with a private balcony, walk-in closet, and a dual-sink 4 pc ensuite. A second full bathroom, and a laundry room with cabinetry and sink complete this level. The finished basement includes a large rec room with wet bar, a 4th bedroom, 3 pc bathroom, and ample storage space!

Built in 2018

Essential Information

MLS® #	E4432192
Price	\$958,000
Bedrooms	4
Bathrooms	3.50
Full Baths	3



Half Baths	1
Square Footage	2,189
Acres	0.00
Year Built	2018
Type	Single Family
Sub-Type	Detached Single Family
Style	2 Storey
Status	Active

Community Information

Address	9245 93 Street
Area	Edmonton
Subdivision	Bonnie Doon
City	Edmonton
County	ALBERTA
Province	AB
Postal Code	T6C 3T5

Amenities

Amenities	Off Street Parking, Air Conditioner, Deck, Wet Bar
Parking Spaces	2
Parking	Double Garage Detached, Over Sized

Interior

Interior Features	ensuite bathroom
Appliances	Air Conditioning-Central, Dishwasher-Built-In, Dryer, Oven-Microwave, Refrigerator, Stove-Electric, Washer, Wine/Beverage Cooler
Heating	Forced Air-1, Natural Gas
Fireplace	Yes
Fireplaces	Tile Surround
Stories	3
Has Basement	Yes
Basement	Full, Finished

Exterior

Exterior	Wood, Stone, Hardie Board Siding
Exterior Features	Fenced, Landscaped, Park/Reserve, Playground Nearby, Schools
Roof	Asphalt Shingles
Construction	Wood, Stone, Hardie Board Siding

Foundation Concrete Perimeter

School Information

Elementary Rutherford School
Middle Kenilworth School
High McNally School

Additional Information

Date Listed April 23rd, 2025
Days on Market 8
Zoning Zone 18

DATA IS DEEMED RELIABLE BUT IS NOT GUARANTEED ACCURATE BY THE REALTORS® ASSOCIATION OF EDMONTON. COPYRIGHT 2025 BY THE REALTORS® ASSOCIATION OF EDMONTON. ALL RIGHTS RESERVED.Trademarks are owned or controlled by the Canadian Real Estate Association (CREA) and identify real estate professionals who are members of CREA (REALTOR®, REALTORS®) and/or the quality of services they provide (MLS®, Multiple Listing Service®)
Listing information last updated on May 1st, 2025 at 2:33pm MDT