

\$624,900 - 78 Wilkinson Place, Leduc

MLS® #E4432814

\$624,900

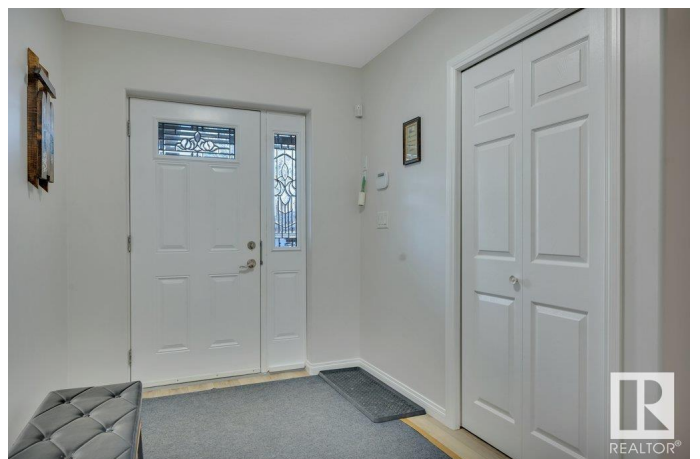
5 Bedroom, 3.00 Bathroom, 1,645 sqft

Single Family on 0.00 Acres

Windrose, Leduc, AB

WOW! Step into style, space & comfort with this HIDDEN GEM tucked away in the highly sought-after community of WINDROSE. This beautifully upgraded 1,645 SQ FT BUNGALOW offers over 3,000 SQ FT of TOTAL LIVING SPACE with VINYL PLANK FLOORING THROUGHOUT. The LOW MAINTENANCE FRONT & BACK YARD features ARTIFICIAL TURF, MODERN GLASS RAILINGS & direct access BACKING ONTO THE PARK. Enjoy year-round comfort with AIR CONDITIONING, HEATED BASEMENT FLOORS, a DOUBLE ATTACHED GARAGE WITH HEATED FLOOR & SHINGLES REPLACED IN 2022. Inside, the MAIN FLOOR showcases VAULTED CEILINGS, a LARGE LIVING ROOM with GAS FIREPLACE & a SPACIOUS KITCHEN with AMPLE STORAGE. There are 3 BEDROOMS, including a relaxing PRIMARY RETREAT with 4PC ENSUITE, plus an additional 4PC BATHROOM. The FULLY FINISHED BASEMENT offers a MASSIVE FAMILY ROOM with FIREPLACE, a HUGE WET BAR that could double as a SECOND KITCHEN, 2 LARGE BEDROOMS & a DEN. Ideally located CLOSE TO SCHOOLS, PARKS & ALL AMENITIES—this home truly has it all!

Built in 2005



Essential Information

MLS® #	E4432814
Price	\$624,900
Bedrooms	5
Bathrooms	3.00
Full Baths	3
Square Footage	1,645
Acres	0.00
Year Built	2005
Type	Single Family
Sub-Type	Detached Single Family
Style	Bungalow
Status	Active

Community Information

Address	78 Wilkinson Place
Area	Leduc
Subdivision	Windrose
City	Leduc
County	ALBERTA
Province	AB
Postal Code	T9E 8N3

Amenities

Amenities	Air Conditioner, Bar, Deck, Fire Pit, Front Porch, No Animal Home, No Smoking Home, Natural Gas BBQ Hookup
Parking	Double Garage Attached, Heated, Insulated

Interior

Interior Features	ensuite bathroom
Appliances	Air Conditioning-Central, Dishwasher-Built-In, Dryer, Garage Control, Garage Opener, Refrigerator, Storage Shed, Stove-Electric, Washer, Window Coverings
Heating	Forced Air-1, In Floor Heat System, Natural Gas
Fireplace	Yes
Fireplaces	Corner
Stories	2
Has Basement	Yes
Basement	Full, Finished

Exterior

Exterior	Wood, Stone, Vinyl
Exterior Features	Airport Nearby, Backs Onto Park/Trees, Fenced, Flat Site, Fruit Trees/Shrubs, Golf Nearby, Level Land, Low Maintenance Landscape, Playground Nearby, Schools, Shopping Nearby
Roof	Asphalt Shingles
Construction	Wood, Stone, Vinyl
Foundation	Insulated Concrete Form

School Information

Elementary	St. Bendicts
High	Ohpaho Secondary

Additional Information

Date Listed	April 25th, 2025
Days on Market	6
Zoning	Zone 81

DATA IS DEEMED RELIABLE BUT IS NOT GUARANTEED ACCURATE BY THE REALTORS® ASSOCIATION OF EDMONTON. COPYRIGHT 2025 BY THE REALTORS® ASSOCIATION OF EDMONTON. ALL RIGHTS RESERVED.Trademarks are owned or controlled by the Canadian Real Estate Association (CREA) and identify real estate professionals who are members of CREA (REALTOR®, REALTORS®) and/or the quality of services they provide (MLS®, Multiple Listing Service®)

Listing information last updated on May 1st, 2025 at 12:17pm MDT