

\$235,000 - 31 290 Spruce Ridge Road, Spruce Grove

MLS® #E4433258

\$235,000

3 Bedroom, 2.00 Bathroom, 1,092 sqft

Condo / Townhouse on 0.00 Acres

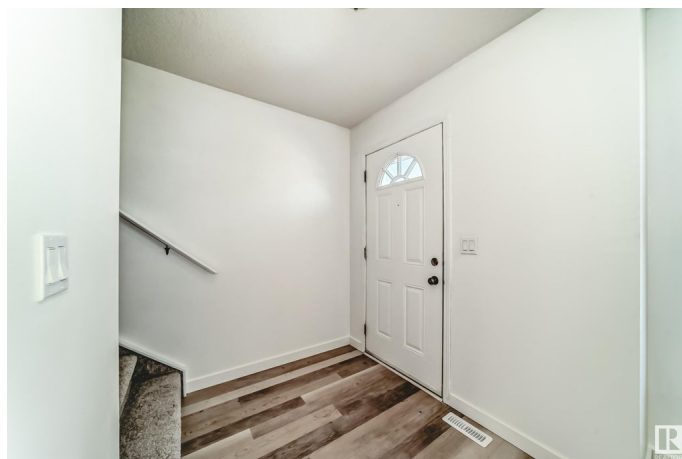
Spruce Ridge, Spruce Grove, AB

Welcome to this incredibly well maintained and upgraded 1092 sq ft 3 bedroom townhouse with a fully finished basement and 2 outdoor parking stalls. Bright and spacious main floor with brand new flooring, all new fresh paint, baseboards, trim and doors. Nice kitchen with Stainless steel appliances. Large deck and South facing yard to enjoy the sunny days. Large living room & dining area with brand new lighting & a 2 piece bathroom. New carpet upstairs with 3 generous sized bedrooms including the primary suite with a walk in closet. All bathroom's are updated with new vanity, lighting & flooring. There is a fully finished basement with a large rec room another 2 piece bathroom, laundry room and ample storage. Great location in Spruce Grove close to all amenities, schools, shopping and much more! 2 exterior parking stalls right n front of the unit. Excellent property for a great price!

Built in 2007

Essential Information

MLS® #	E4433258
Price	\$235,000
Bedrooms	3
Bathrooms	2.00
Full Baths	1



Half Baths	2
Square Footage	1,092
Acres	0.00
Year Built	2007
Type	Condo / Townhouse
Sub-Type	Townhouse
Style	2 Storey
Status	Active

Community Information

Address	31 290 Spruce Ridge Road
Area	Spruce Grove
Subdivision	Spruce Ridge
City	Spruce Grove
County	ALBERTA
Province	AB
Postal Code	T7X 0C4

Amenities

Amenities	Deck, No Animal Home, No Smoking Home, See Remarks
Parking	Stall

Interior

Appliances	Dryer, Hood Fan, Oven-Microwave, Refrigerator, Stove-Electric, Washer, Window Coverings
Heating	Forced Air-1, Natural Gas
Stories	3
Has Basement	Yes
Basement	Full, Finished

Exterior

Exterior	Wood, Vinyl
Exterior Features	Golf Nearby, Landscaped, Schools, Shopping Nearby, See Remarks
Roof	Asphalt Shingles
Construction	Wood, Vinyl
Foundation	Concrete Perimeter

Additional Information

Date Listed	April 29th, 2025
-------------	------------------

Days on Market	2
Zoning	Zone 91
Condo Fee	\$360

DATA IS DEEMED RELIABLE BUT IS NOT GUARANTEED ACCURATE BY THE REALTORS® ASSOCIATION OF EDMONTON. COPYRIGHT 2025 BY THE REALTORS® ASSOCIATION OF EDMONTON. ALL RIGHTS RESERVED.Trademarks are owned or controlled by the Canadian Real Estate Association (CREA) and identify real estate professionals who are members of CREA (REALTOR®, REALTORS®) and/or the quality of services they provide (MLS®, Multiple Listing Service®)

Listing information last updated on May 1st, 2025 at 12:47pm MDT