

\$619,300 - 19322 22a Avenue, Edmonton

MLS® #E4436208

\$619,300

4 Bedroom, 3.00 Bathroom, 1,912 sqft

Single Family on 0.00 Acres

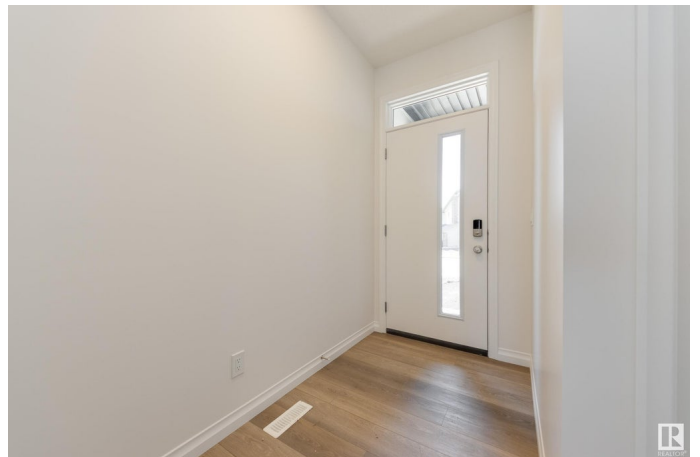
River's Edge, Edmonton, AB

Located in the fantastic community of River's Edge, the Reece 22 by Jayman BUILT offers thoughtful design and energy-efficient features including solar panels, triple pane windows, tankless hot water, HRV, a high-efficiency furnace, and smart home technology. Step inside to 9' ceilings and luxury vinyl plank flooring. The main floor includes a versatile bedroom or flex room with a full bathroom, perfect for guests or office use. An open-concept layout connects the living and dining areas to a stunning kitchen with quartz countertops, a central island with eating bar, stainless steel appliances, and a walk-through pantry. Upstairs, the primary suite includes a walk-in closet and full ensuite. Two additional bedrooms, a second full bath, and a spacious laundry room with linen shelving complete the upper level, along with a generous family room. Set on a large pie lot, this home also includes an attached garage. Plus FULLY landscaped!!

Built in 2025

Essential Information

MLS® #	E4436208
Price	\$619,300
Bedrooms	4
Bathrooms	3.00



Full Baths	3
Square Footage	1,912
Acres	0.00
Year Built	2025
Type	Single Family
Sub-Type	Detached Single Family
Style	2 Storey
Status	Active

Community Information

Address	19322 22a Avenue
Area	Edmonton
Subdivision	River's Edge
City	Edmonton
County	ALBERTA
Province	AB
Postal Code	T6M 3B7

Amenities

Amenities	Ceiling 9 ft., Hot Water Tankless
Parking	Double Garage Attached

Interior

Interior Features	ensuite bathroom
Appliances	Dishwasher-Built-In, Hood Fan, Oven-Microwave, Refrigerator, Stove-Electric
Heating	Forced Air-1, Natural Gas
Stories	2
Has Basement	Yes
Basement	Full, Unfinished

Exterior

Exterior	Wood, Vinyl
Exterior Features	Landscaped, See Remarks
Roof	Asphalt Shingles
Construction	Wood, Vinyl
Foundation	Concrete Perimeter

Additional Information

Date Listed May 13th, 2025

Days on Market 100

Zoning Zone 57

DATA IS DEEMED RELIABLE BUT IS NOT GUARANTEED ACCURATE BY THE REALTORS® ASSOCIATION OF EDMONTON. COPYRIGHT 2025 BY THE REALTORS® ASSOCIATION OF EDMONTON. ALL RIGHTS RESERVED. Trademarks are owned or controlled by the Canadian Real Estate Association (CREA) and identify real estate professionals who are members of CREA (REALTOR®, REALTORS®) and/or the quality of services they provide (MLS®, Multiple Listing Service®)

Listing information last updated on August 21st, 2025 at 5:32pm MDT