

Courtesy Of Trevor C Tardif Of Real Broker

\$229,900 - 1901 10410 102 Avenue, Edmonton

MLS® #E4436514

\$229,900

1 Bedroom, 1.00 Bathroom, 577 sqft
Condo / Townhouse on 0.00 Acres

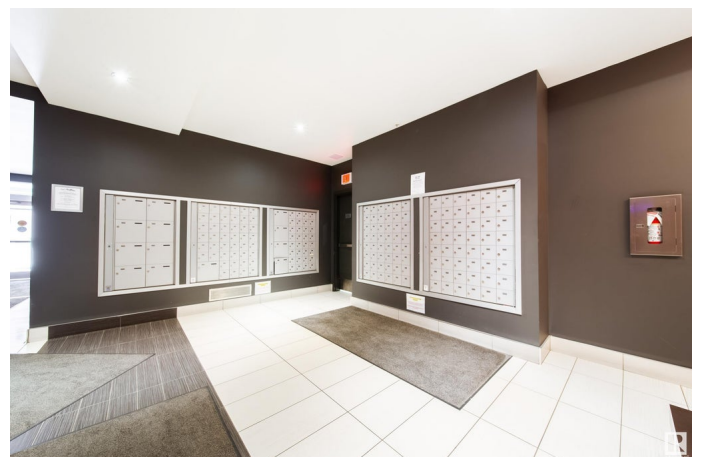
Downtown (Edmonton), Edmonton, AB

Bright, modern, and perched high above the city—this 19th-floor corner unit in FOX Two delivers premium downtown living in the heart of Edmonton’s Ice District. With full-height east-facing windows and sweeping skyline views, this 1-bedroom condo features 9’™ ceilings, durable vinyl plank flooring, and a sleek kitchen with quartz countertops, stainless steel appliances, and a central island perfect for daily life or entertaining. The spacious bedroom includes a walk-through closet with direct access to a well-appointed 4-piece bath and in-suite laundry. Step outside to your large covered balcony, complete with a gas hookup for year-round BBQs or patio heaters. Plus, you’ll stay warm all winter with your TITLED underground heated parking stall. Whether you’re heading to Rogers Place, strolling the River Valley trails, or grabbing dinner at a downtown hotspot—this location makes it effortless. If you’re after sunlight, skyline views, and unbeatable access, this one checks all the boxes.

Built in 2017

Essential Information

MLS® #	E4436514
Price	\$229,900
Bedrooms	1



Bathrooms	1.00
Full Baths	1
Square Footage	577
Acres	0.00
Year Built	2017
Type	Condo / Townhouse
Sub-Type	Apartment High Rise
Style	Single Level Apartment
Status	Active

Community Information

Address	1901 10410 102 Avenue
Area	Edmonton
Subdivision	Downtown (Edmonton)
City	Edmonton
County	ALBERTA
Province	AB
Postal Code	T5J 0E9

Amenities

Amenities	Ceiling 9 ft., Natural Gas BBQ Hookup
Parking	Stall, Underground

Interior

Interior Features	ensuite bathroom
Appliances	Dishwasher-Built-In, Microwave Hood Fan, Refrigerator, Stacked Washer/Dryer, Stove-Electric
Heating	Baseboard, Hot Water, Natural Gas
# of Stories	33
Stories	1
Has Basement	Yes
Basement	None, No Basement

Exterior

Exterior	Concrete, Stucco
Exterior Features	Commercial, Public Transportation, Shopping Nearby, View Downtown
Roof	EPDM Membrane
Construction	Concrete, Stucco
Foundation	Concrete Perimeter

Additional Information

Date Listed May 15th, 2025

Days on Market 98

Zoning Zone 12

Condo Fee \$307

DATA IS DEEMED RELIABLE BUT IS NOT GUARANTEED ACCURATE BY THE REALTORS® ASSOCIATION OF EDMONTON. COPYRIGHT 2025 BY THE REALTORS® ASSOCIATION OF EDMONTON. ALL RIGHTS RESERVED. Trademarks are owned or controlled by the Canadian Real Estate Association (CREA) and identify real estate professionals who are members of CREA (REALTOR®, REALTORS®) and/or the quality of services they provide (MLS®, Multiple Listing Service®)

Listing information last updated on August 21st, 2025 at 5:47pm MDT