

\$178,500 - 208 11217 103 Avenue, Edmonton

MLS® #E4438707

\$178,500

2 Bedroom, 2.00 Bathroom, 1,061 sqft
Condo / Townhouse on 0.00 Acres

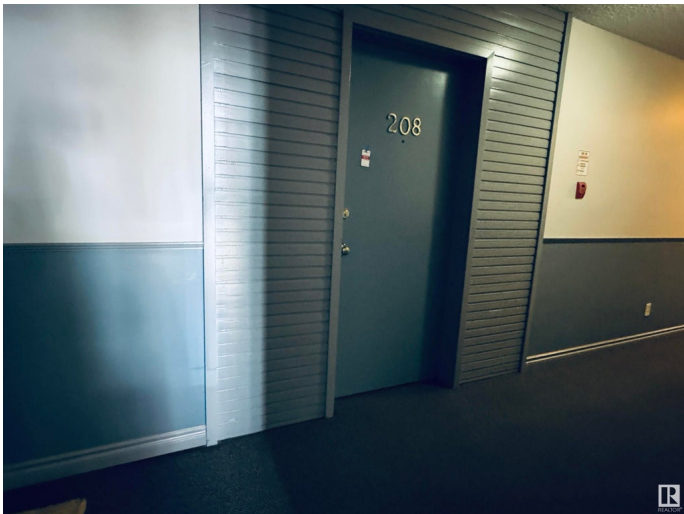
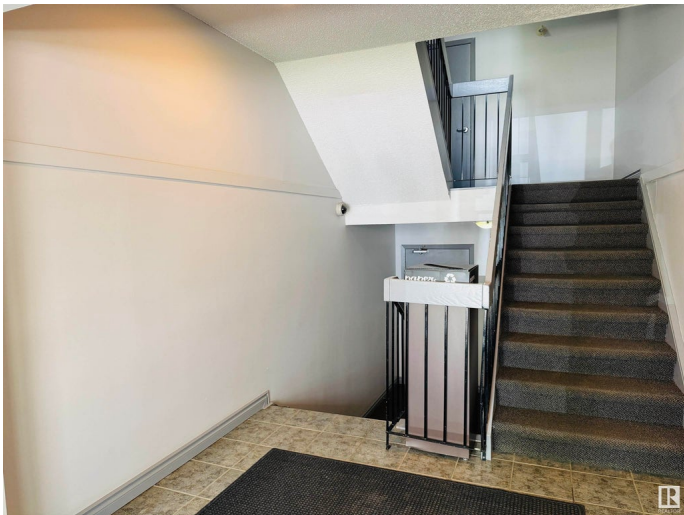
WÃ@hkwÃªntÃ´win, Edmonton, AB

Welcome to this classic and beautifully maintained 2 bedroom, 2 bathroom condo tucked away on a quiet tree-lined street in desirable Oliver. Just steps to Grant MacEwan University, Rogers Place, the Ice District, shopping, restaurants, transit, and even the U of A â€” downtown living doesnâ€™t get much more convenient! Inside youâ€™ll find stunning hardwood floors, rich maple kitchen cabinetry with ample storage, elegant crown mouldings, and custom built-ins throughout. The generous primary suite features a walk-in closet and a luxurious ensuite with a jetted tub and separate stand-up shower. The second bedroom is ideal for guests, a home office, or a cozy study. Additional highlights include in-suite laundry and one of the few homes in the building with energized covered parking. Whether you're a student, professional, or simply someone who loves the downtown lifestyle, this home offers charm, comfort, and unbeatable location.

Built in 1978

Essential Information

MLS® #	E4438707
Price	\$178,500
Bedrooms	2
Bathrooms	2.00



Full Baths	2
Square Footage	1,061
Acres	0.00
Year Built	1978
Type	Condo / Townhouse
Sub-Type	Lowrise Apartment
Style	Single Level Apartment
Status	Active

Community Information

Address	208 11217 103 Avenue
Area	Edmonton
Subdivision	WÃ©hkwÃ¢ntÃ¢win
City	Edmonton
County	ALBERTA
Province	AB
Postal Code	T5K 2V9

Amenities

Amenities	Intercom, Parking-Plug-Ins, Vinyl Windows
Parking	Stall

Interior

Interior Features	ensuite bathroom
Appliances	Dishwasher-Built-In, Intercom, Oven-Microwave, Refrigerator, Stacked Washer/Dryer, Stove-Electric, Window Coverings
Heating	Hot Water, See Remarks
# of Stories	4
Stories	4
Has Basement	Yes
Basement	None, No Basement

Exterior

Exterior	Wood
Exterior Features	Corner Lot, Flat Site, Golf Nearby, Low Maintenance Landscape, Paved Lane, Playground Nearby, Public Transportation, Schools
Roof	Tar & Gravel
Construction	Wood
Foundation	Concrete Perimeter

School Information

Elementary	Wāhkwāntāwin School
Middle	Westminster School
High	Victoria School

Additional Information

Date Listed	May 26th, 2025
Days on Market	22
Zoning	Zone 12
Condo Fee	\$677

DATA IS DEEMED RELIABLE BUT IS NOT GUARANTEED ACCURATE BY THE REALTORS® ASSOCIATION OF EDMONTON. COPYRIGHT 2025 BY THE REALTORS® ASSOCIATION OF EDMONTON. ALL RIGHTS RESERVED.Trademarks are owned or controlled by the Canadian Real Estate Association (CREA) and identify real estate professionals who are members of CREA (REALTOR®, REALTORS®) and/or the quality of services they provide (MLS®, Multiple Listing Service®)

Listing information last updated on June 17th, 2025 at 6:17am MDT