

\$189,900 - 302 13907 136 Street, Edmonton

MLS® #E4441040

\$189,900

2 Bedroom, 2.00 Bathroom, 813 sqft

Condo / Townhouse on 0.00 Acres

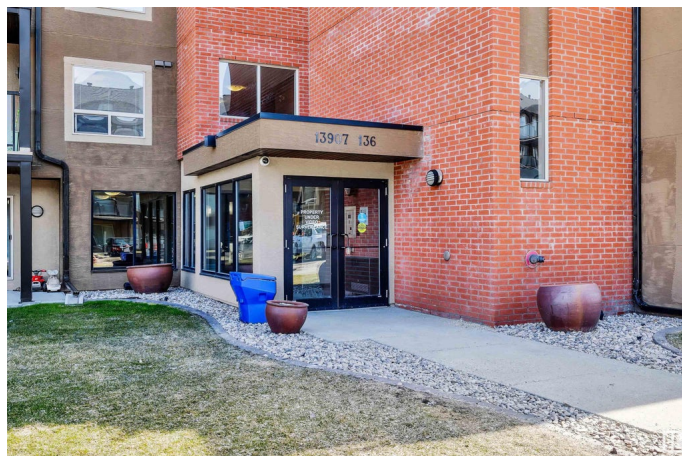
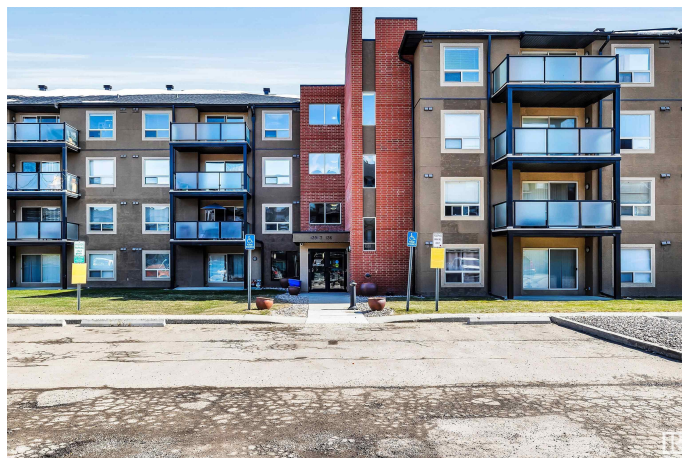
Hudson, Edmonton, AB

Stop the car—this is the one. Tucked at the end of a quiet cul-de-sac, Hudson Village offers security, privacy, and unbeatable convenience. This 2-bedroom, 2-bathroom corner unit sits on the 3rd floor and boasts a wraparound southwest-facing balcony—complete with a gas BBQ hookup. Inside, the open-concept layout includes a well-sized kitchen, dining area, and bright living space. The split-bedroom design places the two bedrooms on opposite sides for added privacy. The primary suite features a 4-piece ensuite and direct access to the balcony. You'll also find in-suite laundry and extra storage. With underground heated parking, on-site management, and a location that feels tucked away yet connected, this one won't last long.

Built in 2005

Essential Information

| | |
|----------------|-----------|
| MLS® # | E4441040 |
| Price | \$189,900 |
| Bedrooms | 2 |
| Bathrooms | 2.00 |
| Full Baths | 2 |
| Square Footage | 813 |
| Acres | 0.00 |
| Year Built | 2005 |



| | |
|----------|------------------------|
| Type | Condo / Townhouse |
| Sub-Type | Lowrise Apartment |
| Style | Single Level Apartment |
| Status | Active |

Community Information

| | |
|-------------|----------------------|
| Address | 302 13907 136 Street |
| Area | Edmonton |
| Subdivision | Hudson |
| City | Edmonton |
| County | ALBERTA |
| Province | AB |
| Postal Code | T6V 1Y5 |

Amenities

| | |
|----------------|--|
| Amenities | Detectors Smoke, Intercom, Parking-Visitor, Secured Parking, Security Door |
| Parking Spaces | 1 |
| Parking | Underground |

Interior

| | |
|-------------------|---|
| Interior Features | ensuite bathroom |
| Appliances | Dishwasher-Built-In, Refrigerator, Stacked Washer/Dryer, Stove-Electric |
| Heating | Hot Water, Natural Gas |
| # of Stories | 4 |
| Stories | 1 |
| Has Basement | Yes |
| Basement | None, No Basement |

Exterior

| | |
|-------------------|---|
| Exterior | Wood, Brick, Stucco |
| Exterior Features | Cul-De-Sac, Landscaped, No Through Road, Playground Nearby, Public Transportation, Schools, Shopping Nearby |
| Roof | Asphalt Shingles |
| Construction | Wood, Brick, Stucco |
| Foundation | Concrete Perimeter |

Additional Information

| | |
|-------------|----------------|
| Date Listed | June 6th, 2025 |
|-------------|----------------|

| | |
|----------------|---------|
| Days on Market | 10 |
| Zoning | Zone 27 |
| Condo Fee | \$593 |

DATA IS DEEMED RELIABLE BUT IS NOT GUARANTEED ACCURATE BY THE REALTORS® ASSOCIATION OF EDMONTON. COPYRIGHT 2025 BY THE REALTORS® ASSOCIATION OF EDMONTON. ALL RIGHTS RESERVED.Trademarks are owned or controlled by the Canadian Real Estate Association (CREA) and identify real estate professionals who are members of CREA (REALTOR®, REALTORS®) and/or the quality of services they provide (MLS®, Multiple Listing Service®)

Listing information last updated on June 16th, 2025 at 7:02pm MDT