

# \$4,999,990 - N/A, Rural Parkland County

MLS® #E4441582

**\$4,999,990**

0 Bedroom, 0.00 Bathroom,  
Rural on 72.70 Acres

None, Rural Parkland County, AB

PRIME DEVELOPMENT OPPORTUNITY! 73 Acres of land just West of The Brickyard West Stony Plain! An exceptional opportunity to acquire a strategically located parcel of land just south of Highway 16a, ideally positioned right next to the fast-growing Suburb of Stony Plain.



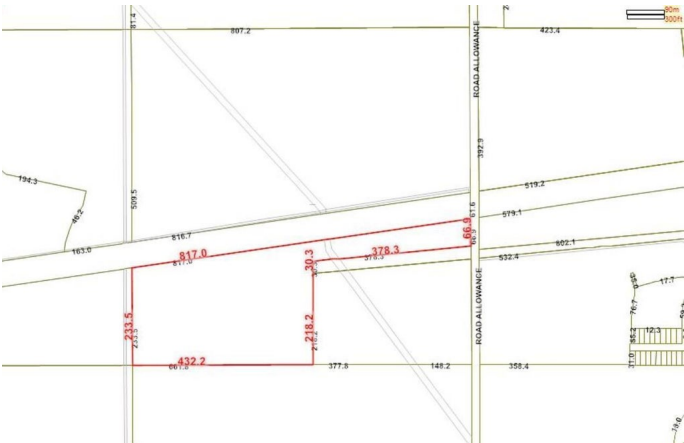
## Essential Information

MLS® #	E4441582
Price	\$4,999,990
Bathrooms	0.00
Acres	72.70
Type	Rural
Sub-Type	Vacant Lot/Land
Status	Active



## Community Information

Address	N/A
Area	Rural Parkland County
Subdivision	None
City	Rural Parkland County
County	ALBERTA
Province	AB
Postal Code	T7Z 0H9



## Exterior

Exterior Features    See Remarks

**Additional Information**

Date Listed                June 10th, 2025  
Days on Market        7  
Zoning                      Zone 91

DATA IS DEEMED RELIABLE BUT IS NOT GUARANTEED ACCURATE BY THE REALTORS® ASSOCIATION OF EDMONTON. COPYRIGHT 2025 BY THE REALTORS® ASSOCIATION OF EDMONTON. ALL RIGHTS RESERVED.Trademarks are owned or controlled by the Canadian Real Estate Association (CREA) and identify real estate professionals who are members of CREA (REALTOR®, REALTORS®) and/or the quality of services they provide (MLS®, Multiple Listing Service®)  
Listing information last updated on June 17th, 2025 at 5:17pm MDT