

## \$949,900 - 14015 104a Avenue, Edmonton

MLS® #E4442132

**\$949,900**

5 Bedroom, 3.00 Bathroom, 1,334 sqft

Single Family on 0.00 Acres

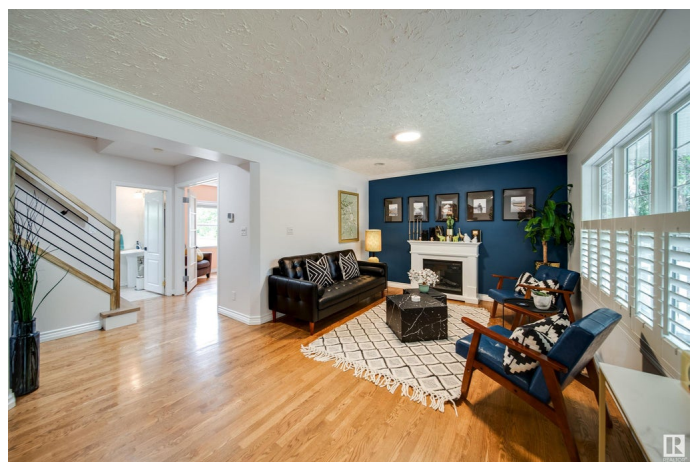
Glenora, Edmonton, AB

2 HOMES ON ONE FANTASTIC 50X150 LOT IN GLENORA WITH A SUNNY SOUTH FACING YARD! That's right, there is a less than 5 year old garden suite professionally constructed that features 571 sqft, 1 bed, 1-4pce bath, vaulted ceilings, kitchen, living room and deck with pergola - This is the perfect rental suite/gym/studio/office... you name it! The main house has seen extensive renovations, including an all new basement, main floor updates and fully renovated second floor. Welcome yourself to the main floor where you will find a dining area, living room, den/2nd bed, full bath and a cute kitchen ready for the chef at heart. The upstairs is a true primary retreat with a large walk in closet, plenty of space for a king bed and a beautiful en suite! The completely new basement features structural work to ensure years or reliability, 2 more beds, full bath with laundry and a rec room with wet bar! Newer furnace, electrical and H2O tank plus AC as well!

Built in 1949

### Essential Information

MLS® #	E4442132
Price	\$949,900
Bedrooms	5
Bathrooms	3.00



Full Baths	3
Square Footage	1,334
Acres	0.00
Year Built	1949
Type	Single Family
Sub-Type	Detached Single Family
Style	1 and Half Storey
Status	Active

### Community Information

Address	14015 104a Avenue
Area	Edmonton
Subdivision	Glenora
City	Edmonton
County	ALBERTA
Province	AB
Postal Code	T5N 0Y1

### Amenities

Amenities	Guest Suite, No Smoking Home
Parking Spaces	2
Parking	Single Garage Detached

### Interior

Interior Features	ensuite bathroom
Appliances	Air Conditioning-Central, Garage Control, Garage Opener, Microwave Hood Fan, Storage Shed, Window Coverings, Dryer-Two, Refrigerators-Two, Stoves-Two, Washers-Two, Dishwasher-Two
Heating	Forced Air-2, Natural Gas
Fireplace	Yes
Fireplaces	Freestanding
Stories	3
Has Basement	Yes
Basement	Full, Finished

### Exterior

Exterior	Wood, Vinyl
Exterior Features	Back Lane, Fenced, Flat Site, Landscaped, Playground Nearby, Public Transportation, Schools, Shopping Nearby, Treed Lot, See Remarks

Lot Description	50â€™x150â€™
Roof	Asphalt Shingles
Construction	Wood, Vinyl
Foundation	Concrete Perimeter

**Additional Information**

Date Listed	June 12th, 2025
Days on Market	4
Zoning	Zone 11

DATA IS DEEMED RELIABLE BUT IS NOT GUARANTEED ACCURATE BY THE REALTORS® ASSOCIATION OF EDMONTON. COPYRIGHT 2025 BY THE REALTORS® ASSOCIATION OF EDMONTON. ALL RIGHTS RESERVED.Trademarks are owned or controlled by the Canadian Real Estate Association (CREA) and identify real estate professionals who are members of CREA (REALTOR®, REALTORS®) and/or the quality of services they provide (MLS®, Multiple Listing Service®)

Listing information last updated on June 16th, 2025 at 2:02pm MDT