

\$490,000 - 7598 Ellesmere Way, Sherwood Park

MLS® #E4442210

\$490,000

4 Bedroom, 3.5 Bathroom, 1,537 sqft
Single Family on 0.00 Acres

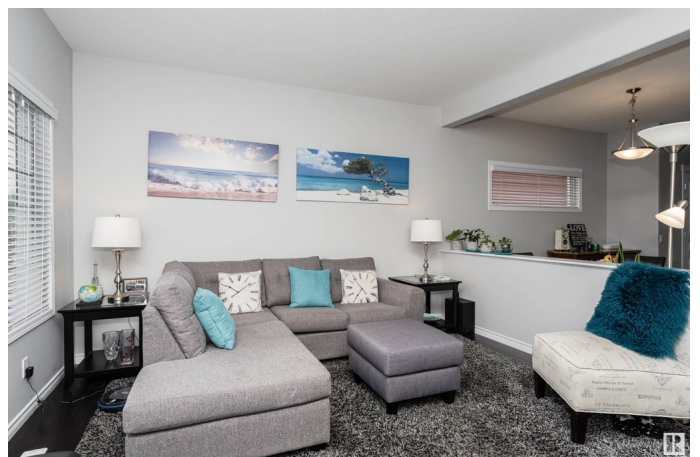
Emerald Hills, Sherwood Park, AB

Your Fresh Start Awaits in This Stunning Half-Duplex! Step into your new chapter with this beautifully appointed 1,500 sq ft home designed for comfortable, independent living. Four spacious bedrooms offer flexibility - perfect for a home office, guest room, or creative space that's truly yours. The finished basement provides a private retreat for relaxation or entertaining friends. Gleaming stainless steel appliances in the kitchen make cooking a joy, whether it's a quiet dinner for one or hosting your favourite people. Unwind on your private deck overlooking the gorgeously landscaped backyard - your personal sanctuary for morning coffee or evening wine. The attached garage offers security and convenience, while 3.5 bathrooms mean no more sharing space! This show-home condition property is move-in ready, so you can focus on what matters most - creating new memories in a space that celebrates your independence and style. Welcome home to your next beautiful adventure!

Built in 2012

Essential Information

MLS® #	E4442210
Price	\$490,000



Bedrooms	4
Bathrooms	3.50
Full Baths	3
Half Baths	1
Square Footage	1,537
Acres	0.00
Year Built	2012
Type	Single Family
Sub-Type	Half Duplex
Style	2 Storey
Status	Active

Community Information

Address	7598 Ellesmere Way
Area	Sherwood Park
Subdivision	Emerald Hills
City	Sherwood Park
County	ALBERTA
Province	AB
Postal Code	T8H 0P7

Amenities

Amenities	Carbon Monoxide Detectors, Closet Organizers, Deck, Detectors Smoke, No Smoking Home, Smart/Program. Thermostat, Exterior Walls 2"x8"
Parking Spaces	2
Parking	Single Garage Attached

Interior

Interior Features	ensuite bathroom
Appliances	Dishwasher-Built-In, Dryer, Garage Control, Garage Opener, Microwave Hood Fan, Refrigerator, Storage Shed, Stove-Electric, Washer, Window Coverings
Heating	Forced Air-1, Natural Gas
Stories	3
Has Basement	Yes
Basement	Full, Finished

Exterior

Exterior	Wood, Vinyl
Exterior Features	Fenced, Playground Nearby, Public Swimming Pool, Public Transportation, Schools, Shopping Nearby
Roof	Asphalt Shingles
Construction	Wood, Vinyl
Foundation	Concrete Perimeter

Additional Information

Date Listed June 13th, 2025

Days on Market 4

Zoning Zone 25

DATA IS DEEMED RELIABLE BUT IS NOT GUARANTEED ACCURATE BY THE REALTORS® ASSOCIATION OF EDMONTON. COPYRIGHT 2025 BY THE REALTORS® ASSOCIATION OF EDMONTON. ALL RIGHTS RESERVED. Trademarks are owned or controlled by the Canadian Real Estate Association (CREA) and identify real estate professionals who are members of CREA (REALTOR®, REALTORS®) and/or the quality of services they provide (MLS®, Multiple Listing Service®)

Listing information last updated on June 16th, 2025 at 11:02pm MDT