

\$399,707 - 380 Village Drive, Sherwood Park

MLS® #E4442410

\$399,707

3 Bedroom, 2.50 Bathroom, 1,239 sqft

Single Family on 0.00 Acres

Village on the Lake, Sherwood Park, AB

GREAT FIRST HOME OR INVESTMENT PROPERTY! EXTENSIVELY RENOVATED!

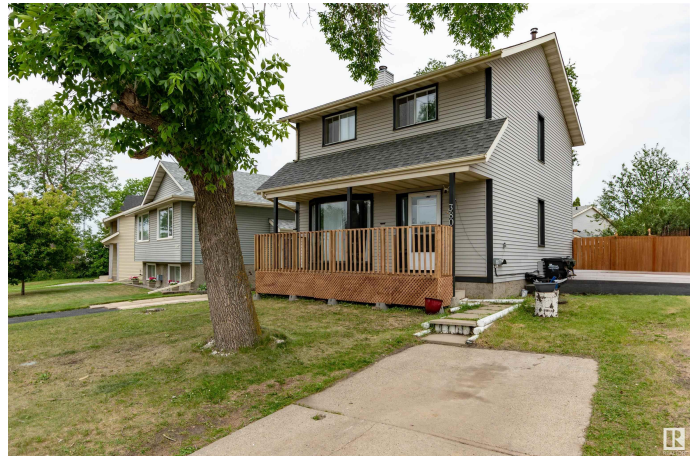
Super location close to shopping, restaurants, schools and public transit. Many of the high ticket items have been done including:

SHINGLES, FURNACE & HWT. Spacious living room with attractive stone-facing gas fireplace and vinyl plank flooring. Lovely kitchen with new fridge, new stove and new dishwasher. Total of 3 bedrooms and 3 bathrooms. Powder room on main, a beautiful 4 piece bathroom upstairs plus beautiful 3 piece ensuite in the Primary Bedroom. Lovely backyard with deck, pergola plus a nice hot-tub! Nice new front deck too! The basement features a family room, den, laundry and storage space. Park 2 vehicles on your front pad with outside electric vehicle charger for Tesla or camper. Great value and location! Visit REALTOR® website for more information.

Built in 1981

Essential Information

MLS® #	E4442410
Price	\$399,707
Bedrooms	3
Bathrooms	2.50
Full Baths	2



Half Baths	1
Square Footage	1,239
Acres	0.00
Year Built	1981
Type	Single Family
Sub-Type	Detached Single Family
Style	2 Storey
Status	Active

Community Information

Address	380 Village Drive
Area	Sherwood Park
Subdivision	Village on the Lake
City	Sherwood Park
County	ALBERTA
Province	AB
Postal Code	T8A 4N3

Amenities

Amenities	Front Porch
Parking	Parking Pad Cement/Paved

Interior

Interior Features	ensuite bathroom
Appliances	Dryer, Hood Fan, Refrigerator, Storage Shed, Stove-Electric, Washer, Window Coverings, See Remarks, TV Wall Mount, Hot Tub
Heating	Forced Air-1, Natural Gas
Fireplace	Yes
Fireplaces	Stone Facing
Stories	2
Has Basement	Yes
Basement	Full, Partially Finished

Exterior

Exterior	Wood, Metal
Exterior Features	Fenced, Landscaped, Playground Nearby, Public Transportation, Schools, Shopping Nearby
Roof	Asphalt Shingles
Construction	Wood, Metal

Foundation Concrete Perimeter

Additional Information

Date Listed June 13th, 2025
Days on Market 3
Zoning Zone 25

DATA IS DEEMED RELIABLE BUT IS NOT GUARANTEED ACCURATE BY THE REALTORS® ASSOCIATION OF EDMONTON. COPYRIGHT 2025 BY THE REALTORS® ASSOCIATION OF EDMONTON. ALL RIGHTS RESERVED.Trademarks are owned or controlled by the Canadian Real Estate Association (CREA) and identify real estate professionals who are members of CREA (REALTOR®, REALTORS®) and/or the quality of services they provide (MLS®, Multiple Listing Service®)
Listing information last updated on June 16th, 2025 at 4:47pm MDT