

## \$419,900 - 7161 Cardinal Way, Edmonton

MLS® #E4445689

**\$419,900**

3 Bedroom, 2.50 Bathroom, 1,547 sqft

Single Family on 0.00 Acres

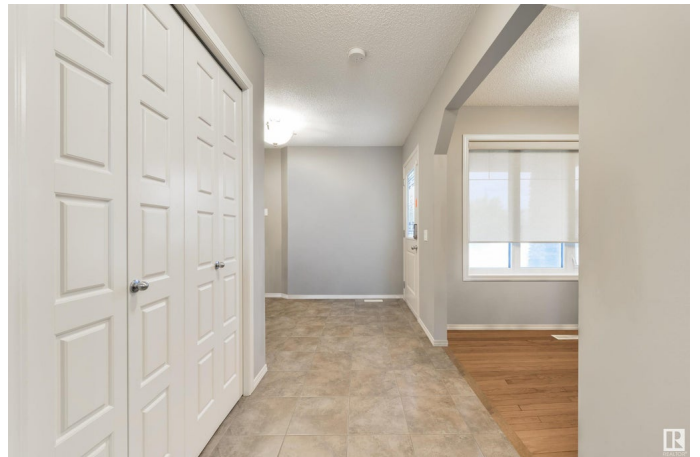
Chappelle Area, Edmonton, AB

Come home to this beautiful duplex (NO CONDO FEES) in the sought-after neighbourhood of Chappelle! - This well-maintained home is over 1500 sq ft and features 3 spacious bedrooms, 2.5 bathrooms, a main floor den and UPSTAIRS LAUNDRY. The open concept kitchen features espresso cabinetry, stainless steel appliances & Granite Countertops. Upstairs you'll find a king-sized primary bedroom with a 4 PC Ensuite and walk-in closet plus two more generous sized bedrooms with access to another 4 PC Bathroom. The basement is ready for your finishing touches!

Built in 2015

### Essential Information

MLS® #	E4445689
Price	\$419,900
Bedrooms	3
Bathrooms	2.50
Full Baths	2
Half Baths	1
Square Footage	1,547
Acres	0.00
Year Built	2015
Type	Single Family
Sub-Type	Half Duplex



Style	2 Storey
Status	Active

### Community Information

Address	7161 Cardinal Way
Area	Edmonton
Subdivision	Chappelle Area
City	Edmonton
County	ALBERTA
Province	AB
Postal Code	T6W 2Y3

### Amenities

Amenities	Deck
Parking	Single Garage Attached

### Interior

Interior Features	ensuite bathroom
Appliances	Dishwasher-Built-In, Dryer, Microwave Hood Fan, Refrigerator, Stove-Electric, Washer
Heating	Forced Air-1, Natural Gas
Stories	2
Has Basement	Yes
Basement	Full, Unfinished

### Exterior

Exterior	Wood, Vinyl
Exterior Features	Landscaped, Playground Nearby, Schools, Shopping Nearby
Roof	Asphalt Shingles
Construction	Wood, Vinyl
Foundation	Concrete Perimeter

### Additional Information

Date Listed	July 3rd, 2025
Days on Market	10
Zoning	Zone 55
HOA Fees	100
HOA Fees Freq.	Annually

DATA IS DEEMED RELIABLE BUT IS NOT GUARANTEED ACCURATE BY THE REALTORS® ASSOCIATION OF

EDMONTON. COPYRIGHT 2025 BY THE REALTORS® ASSOCIATION OF EDMONTON. ALL RIGHTS RESERVED.Trademarks are owned or controlled by the Canadian Real Estate Association (CREA) and identify real estate professionals who are members of CREA (REALTOR®, REALTORS®) and/or the quality of services they provide (MLS®, Multiple Listing Service®)

Listing information last updated on July 13th, 2025 at 3:02am MDT