

\$464,900 - 21335 91a Avenue, Edmonton

MLS® #E4448565

\$464,900

4 Bedroom, 3.50 Bathroom, 1,525 sqft

Single Family on 0.00 Acres

Suder Greens, Edmonton, AB

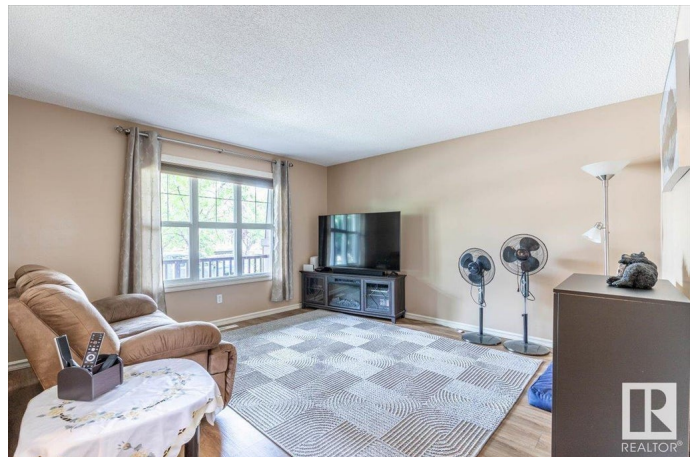
Fully Finished 1524 sq/ft home with lots of upgrades and a Double Detached Garage. Upgrades include: Shingles in 2023, Air Conditioning in 2022, Granite Countertops in 2021, Carpet in 2020, Garage Insulated in 2021 with new Door System, Fridge & Stove in 2021, Washer & Dryer in 2020, Microwave-Hood Fan in 2021, Blinds in 2021, Back Deck covering in 2022, and Deck Freshly painted in 2025. Past the covered front deck enter the main floor of the home that hosts the living room, spacious kitchen with a corner pantry, dining room, mudroom, and a 2 piece bathroom. The upper level has three bedrooms including the primary with its own walk-in closet and 4 piece ensuite bathroom. Another 4 piece bathroom and laundry conclude the upper level. The basement is fully finished with the fourth bedroom of the home, another 4 piece bathroom, and family room. The Backyard is fully landscaped with fruit trees, and has another large covered deck off the back of the home leading to the garage with a paved back lane.

Built in 2006

Essential Information

MLS® # E4448565

Price \$464,900



Bedrooms	4
Bathrooms	3.50
Full Baths	3
Half Baths	1
Square Footage	1,525
Acres	0.00
Year Built	2006
Type	Single Family
Sub-Type	Detached Single Family
Style	2 Storey
Status	Active

Community Information

Address	21335 91a Avenue
Area	Edmonton
Subdivision	Suder Greens
City	Edmonton
County	ALBERTA
Province	AB
Postal Code	T5T 0W5

Amenities

Amenities	Air Conditioner, Deck, See Remarks
Parking	Double Garage Detached, Insulated, Rear Drive Access, See Remarks

Interior

Interior Features	ensuite bathroom
Appliances	Air Conditioning-Central, Dishwasher-Built-In, Dryer, Garage Control, Garage Opener, Microwave Hood Fan, Stove-Electric, Washer, Window Coverings, Refrigerators-Two
Heating	Forced Air-1, Natural Gas
Stories	3
Has Basement	Yes
Basement	Full, Finished

Exterior

Exterior	Wood, Vinyl
Exterior Features	Fenced, Fruit Trees/Shrubs, Golf Nearby, Landscaped, Level Land, Paved Lane, Schools, Shopping Nearby, Treed Lot, See Remarks

Roof	Asphalt Shingles
Construction	Wood, Vinyl
Foundation	Concrete Perimeter

Additional Information

Date Listed	July 18th, 2025
Days on Market	2
Zoning	Zone 58

DATA IS DEEMED RELIABLE BUT IS NOT GUARANTEED ACCURATE BY THE REALTORS® ASSOCIATION OF EDMONTON. COPYRIGHT 2025 BY THE REALTORS® ASSOCIATION OF EDMONTON. ALL RIGHTS RESERVED.Trademarks are owned or controlled by the Canadian Real Estate Association (CREA) and identify real estate professionals who are members of CREA (REALTOR®, REALTORS®) and/or the quality of services they provide (MLS®, Multiple Listing Service®)

Listing information last updated on July 20th, 2025 at 6:02am MDT