

\$325,000 - 108 1670 Jamha Road, Edmonton

MLS® #E4451766

\$325,000

3 Bedroom, 2.50 Bathroom, 1,689 sqft
Condo / Townhouse on 0.00 Acres

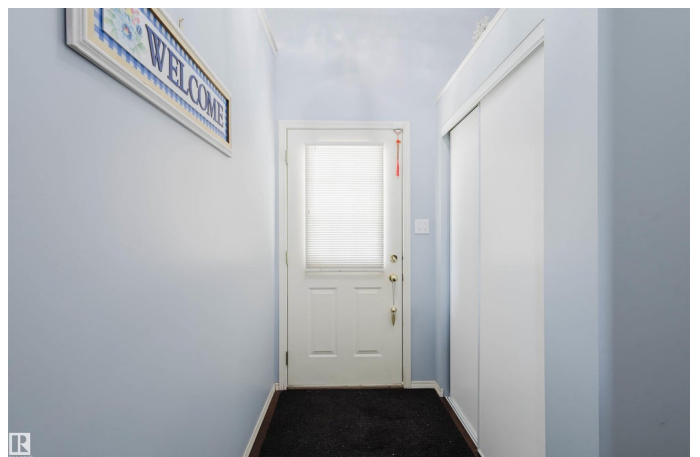
Jackson Heights, Edmonton, AB

Welcome to Tiffany Lane in Jackson Heights! This well-maintained, air-conditioned 2-storey townhome offers 1,680+ sqft of functional living space in a highly sought-after, pet-friendly complex. The bright main floor features a spacious living room with bay windows, laminate flooring & cozy gas fireplace, plus a large kitchen with ample cabinetry, counter space, and pantry. Dining area opens to a private deck – great for relaxing or entertaining. Upstairs you'll find a massive primary suite with walk-in closet & 4pc ensuite, plus two additional bedrooms, a full bath, and convenient upper floor laundry. The lower level includes plenty of storage, utility room with newer 2-stage furnace & hot water tank, and access to an oversized double garage (18'x29'). Prime location across from Jackie Parker Rec Centre with easy access to Millwoods Golf Course, Whitemud, Anthony Henday & all amenities. Comfort, space, and convenience – townhome living at its best!

Built in 1997

Essential Information

MLS® #	E4451766
Price	\$325,000
Bedrooms	3
Bathrooms	2.50



Full Baths	2
Half Baths	1
Square Footage	1,689
Acres	0.00
Year Built	1997
Type	Condo / Townhouse
Sub-Type	Townhouse
Style	2 Storey
Status	Active

Community Information

Address	108 1670 Jamha Road
Area	Edmonton
Subdivision	Jackson Heights
City	Edmonton
County	ALBERTA
Province	AB
Postal Code	T6L 7B3

Amenities

Amenities	Air Conditioner, Deck, Detectors Smoke, Parking-Visitor, Vinyl Windows
Parking Spaces	4
Parking	Double Garage Attached

Interior

Interior Features	ensuite bathroom
Appliances	Air Conditioning-Central, Dishwasher-Built-In, Dryer, Garage Control, Garage Opener, Hood Fan, Refrigerator, Stove-Electric, Washer, Window Coverings
Heating	Forced Air-1, Natural Gas
Stories	2
Has Basement	Yes
Basement	Partial, Finished

Exterior

Exterior	Wood, Vinyl
Exterior Features	Landscaped, Playground Nearby, Public Transportation, Schools, Shopping Nearby
Roof	Asphalt Shingles

Construction	Wood, Vinyl
Foundation	Slab

School Information

Elementary	Jackson Heights School
Middle	Thelma Chalifoux School
High	W.P. Wagner School

Additional Information

Date Listed	August 7th, 2025
Days on Market	14
Zoning	Zone 29
Condo Fee	\$450

DATA IS DEEMED RELIABLE BUT IS NOT GUARANTEED ACCURATE BY THE REALTORS® ASSOCIATION OF EDMONTON. COPYRIGHT 2025 BY THE REALTORS® ASSOCIATION OF EDMONTON. ALL RIGHTS RESERVED. Trademarks are owned or controlled by the Canadian Real Estate Association (CREA) and identify real estate professionals who are members of CREA (REALTOR®, REALTORS®) and/or the quality of services they provide (MLS®, Multiple Listing Service®)

Listing information last updated on August 21st, 2025 at 5:17am MDT