

\$395,000 - 52 Nevis Close, St. Albert

MLS® #E4453855

\$395,000

3 Bedroom, 2.50 Bathroom, 1,335 sqft

Single Family on 0.00 Acres

North Ridge, St. Albert, AB

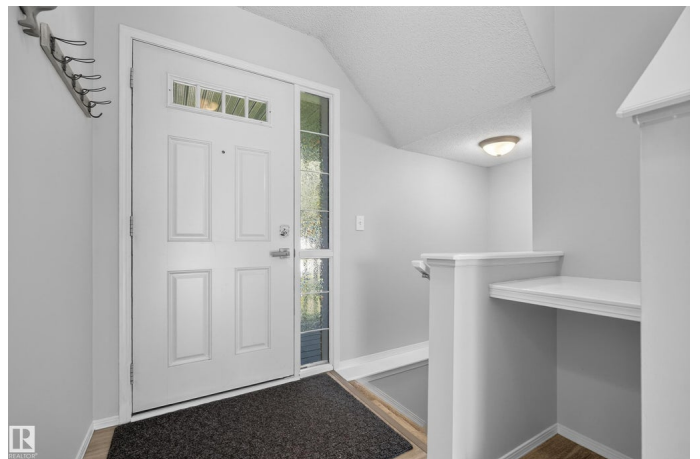
Bright, Fresh & Ready to Call Home in St. Albert's North Ridge! Welcome to one of St. Albert's most sought-after family communities, where walking trails, schools, and green spaces are right outside your door. This freshly updated half duplex shines with new vinyl and paint throughout, giving it a crisp, move-in-ready feel. From the charming front porch with its trendy door to the open-concept main floor, you'll feel the warmth instantly. The kitchen offers a great island for meal prep and casual dining, while the great room features a cozy corner gas fireplace: perfect for Alberta winters. Step out to your fully fenced backyard, backing a walking path, and enjoy unbeatable trails and parks just steps away. Upstairs you'll find a spacious primary retreat with a 4-piece ensuite and walk-in closet, plus two more bedrooms and a full bath. The basement is open for future development with roughed-in plumbing. With quick access to Ray Gibbon Drive and the Henday, plus St. Albert's renowned amenities, comfort, location and lifestyle.

Built in 2007

Essential Information

MLS® # E4453855

Price \$395,000



Bedrooms	3
Bathrooms	2.50
Full Baths	2
Half Baths	1
Square Footage	1,335
Acres	0.00
Year Built	2007
Type	Single Family
Sub-Type	Half Duplex
Style	2 Storey
Status	Active

Community Information

Address	52 Nevis Close
Area	St. Albert
Subdivision	North Ridge
City	St. Albert
County	ALBERTA
Province	AB
Postal Code	T8N 0R7

Amenities

Amenities	Deck, No Smoking Home, Vinyl Windows
Parking	Single Garage Attached

Interior

Interior Features	ensuite bathroom
Appliances	Dishwasher-Built-In, Dryer, Garage Control, Garage Opener, Hood Fan, Refrigerator, Stove-Electric, Washer
Heating	Forced Air-1, Natural Gas
Fireplace	Yes
Fireplaces	Insert
Stories	2
Has Basement	Yes
Basement	Full, Unfinished

Exterior

Exterior	Wood, Vinyl
Exterior Features	Fenced, Flat Site, Golf Nearby, Landscaped, No Back Lane, Playground

	Nearby, Schools, Shopping Nearby
Roof	Asphalt Shingles
Construction	Wood, Vinyl
Foundation	Concrete Perimeter

Additional Information

Date Listed	August 20th, 2025
Zoning	Zone 24

DATA IS DEEMED RELIABLE BUT IS NOT GUARANTEED ACCURATE BY THE REALTORS® ASSOCIATION OF EDMONTON. COPYRIGHT 2025 BY THE REALTORS® ASSOCIATION OF EDMONTON. ALL RIGHTS RESERVED. Trademarks are owned or controlled by the Canadian Real Estate Association (CREA) and identify real estate professionals who are members of CREA (REALTOR®, REALTORS®) and/or the quality of services they provide (MLS®, Multiple Listing Service®)

Listing information last updated on August 20th, 2025 at 9:18pm MDT