

# \$429,900 - 16027 92 Avenue, Edmonton

MLS® #E4458410

**\$429,900**

3 Bedroom, 2.00 Bathroom, 1,104 sqft  
Single Family on 0.00 Acres

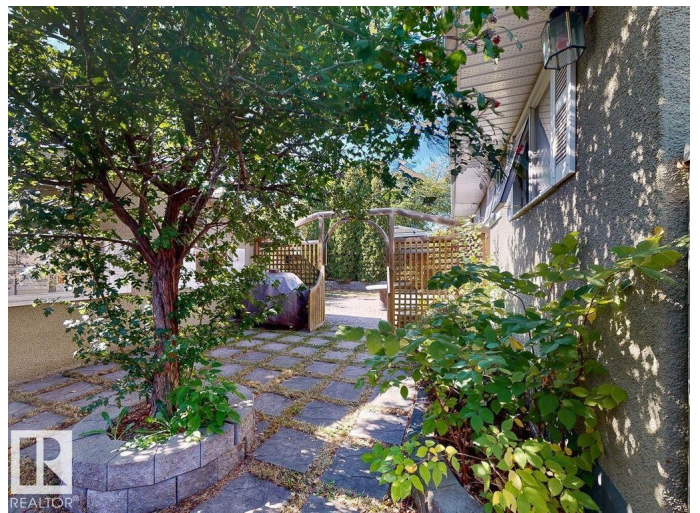
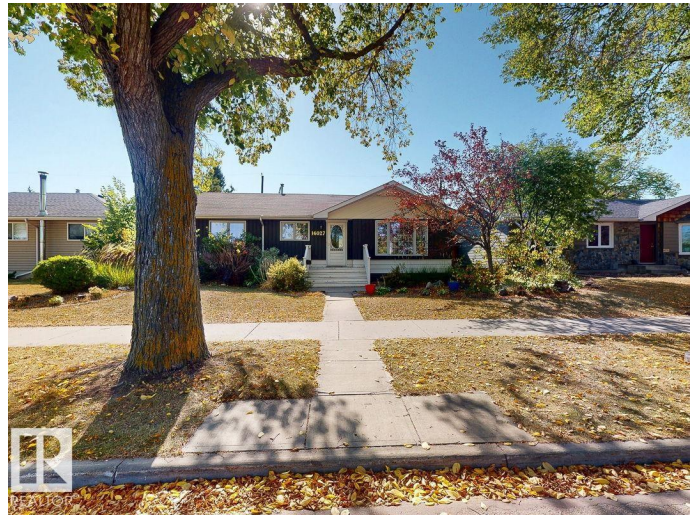
Meadowlark Park (Edmonton), Edmonton, AB

Welcome to this charming bungalow in one of the most desirable locations—right across from a park and close to Jasper Place, schools, parks, shopping and walking trails. The main floor offers 2 bedrooms plus a versatile flex room, an inviting open and updated kitchen with granite countertops, and a bright great room with hardwood flooring. A full 4-piece bath completes the level. The finished basement expands your living space with an additional bedroom, rec room, den, and 3-piece bath. Step outside to a private backyard oasis with mature trees, 2 storage sheds, and a double oversized garage. With central A/C, a new furnace (2022), and thoughtful updates throughout, this home has been lovingly cared for. Its warm character, modern touches, and unbeatable location make it the perfect place to create lasting memories.

Built in 1960

## Essential Information

MLS® #	E4458410
Price	\$429,900
Bedrooms	3
Bathrooms	2.00
Full Baths	2
Square Footage	1,104



Acres	0.00
Year Built	1960
Type	Single Family
Sub-Type	Detached Single Family
Style	Bungalow
Status	Active

### **Community Information**

Address	16027 92 Avenue
Area	Edmonton
Subdivision	Meadowlark Park (Edmonton)
City	Edmonton
County	ALBERTA
Province	AB
Postal Code	T5R 5C7

### **Amenities**

Amenities	On Street Parking, Air Conditioner, Detectors Smoke, No Smoking Home
Parking Spaces	4
Parking	Double Garage Detached, Over Sized

### **Interior**

Appliances	Air Conditioning-Central, Dishwasher-Built-In, Dryer, Oven-Built-In, Storage Shed, Stove-Countertop Electric, Washer, Refrigerators-Two
Heating	Forced Air-1, Natural Gas
Stories	2
Has Basement	Yes
Basement	Full, Finished

### **Exterior**

Exterior	Wood, Stucco
Exterior Features	Back Lane, Fenced, Landscaped, Playground Nearby, Private Setting, Public Swimming Pool, Public Transportation, Schools, Shopping Nearby
Roof	Asphalt Shingles
Construction	Wood, Stucco
Foundation	Concrete Perimeter

### **School Information**

Elementary Meadowlark School  
High Jasper Place

### **Additional Information**

Date Listed September 18th, 2025  
Days on Market 1  
Zoning Zone 22

DATA IS DEEMED RELIABLE BUT IS NOT GUARANTEED ACCURATE BY THE REALTORS® ASSOCIATION OF EDMONTON. COPYRIGHT 2025 BY THE REALTORS® ASSOCIATION OF EDMONTON. ALL RIGHTS RESERVED. Trademarks are owned or controlled by the Canadian Real Estate Association (CREA) and identify real estate professionals who are members of CREA (REALTOR®, REALTORS®) and/or the quality of services they provide (MLS®, Multiple Listing Service®)

Listing information last updated on September 18th, 2025 at 9:31pm MDT